

Qualcomm TPS SkyLogger Survey

User Guide

80-42205-1 Rev. AB

October 20, 2023

Revision history

Revision	Date	Description
AB	October 2023	Updated the document to conform to current documentation standards. No technical content was changed in this revision.
AA	June 2022	Initial release

Contents

- 1 Overview 4
- 2 Install and configure the SkyLogger application 5
 - 2.1 Supported Android versions 5
 - 2.2 Configure the test device 5
 - 2.2.1 Device requirements 6
 - 2.2.2 Device configuration 6
 - 2.2.3 Activation code 6
 - 2.3 Install SkyLogger application 6
- 3 SkyLogger application field test 8
 - 3.1 Best practices 8
 - 3.2 Record a session 8
 - 3.2.1 Configure the SkyLogger application 8
 - 3.3 Marking ground truth 11
 - 3.4 Perform stationary survey 12
 - 3.5 Perform walking survey 13
 - 3.6 Process results 15

1 Overview

The Qualcomm terrestrial positioning service (TPS) SkyLogger application is designed to allow a user to signal map an indoor location and help to improve the quality and accuracy of location returned by the Qualcomm TPS API.

The SkyLogger application collects and logs the field test data to replay and analyze the performance and accuracy of the Qualcomm hybrid positioning system. To achieve this, the application leverages the Skyhook precision location SDK for Android.

Scope

This document is intended for users to submit ground-truth locations with accurate Wi-Fi, cell data, and Bluetooth data to Qualcomm TPS servers.

Technical assistance

For assistance or clarification on information in this document, go to [qualcomm.com/support](https://www.qualcomm.com/support).

2 Install and configure the SkyLogger application

The SkyLogger application is installed through push to the device method with the ABD command or the APK file that is downloaded in the device.

NOTE To get access to APK file, contact QTI point of contact.

2.1 Supported Android versions

The SkyLogger application work with devices with Android versions 8 and above.

SkyLogger application runs on devices with the following Android versions.

- Android 8 and above: SkyLogger application is tested in Android 8.1 and above versions.
- Android 9 and above: SkyLogger application runs on Android 9 and above versions but at a lower scan rate due to the operating system throttle for on-demand Wi-Fi scanning functionality.

If the throttle for on-demand Wi-Fi scanning is not disabled, Qualcomm recommends NOT to run the SkyLogger application.

- Android 10 and above: If the user is testing with Android 10 and above versions, do the following settings in the device:
 - a. In **Settings**, select **About device** > **Version** > **Build number**.
 - b. To enable **Developer** options, tap **Build number** option seven times until `You are now a developer!` message appears.
 - c. In **Developer options**, disable **Wi-Fi scan throttling**.
 - d. In **Settings**, select **Location** > **Location Services**, and select **Enable Wi-Fi scanning**.

For more information on configuring developer options in an Android device, go to <https://developer.android.com/studio/debug/dev-options>

2.2 Configure the test device

The Qualcomm TPS SkyLogger application collects the ground-truth locations with accurate Wi-Fi, cellular data, and Bluetooth data and uploads to Qualcomm TPS servers.

Before installing the TPS SkyLogger application, the test device must be configured.

2.2.1 Device requirements

The SkyLogger application works on any device with Android version 8 and above. However, QTI recommends using the application in Android versions 10 and above.

2.2.2 Device configuration

The test device must be configured before installing or running the SkyLogger application.

To configure the test device, do the following settings in the device:

1. (Mandatory) In **Settings**, do the following settings:
 - a. Disable **Wi-Fi** to enable maximize the number of the Wi-Fi scans that the SkyLogger application collects without throttled by the device.
For devices with Android 10 and above versions, disable **Wi-Fi scan throttling**. See [Supported Android versions](#) for more information.
 - b. Enable **Location**
 - c. Turn off **Power Optimization, Applications > Application management > Battery usage > SkyLogger > Don't optimize**
2. (Optional) Increase screen timeout, in **Settings > Display > Screen timeout > 30 minutes**
3. (Optional) Disable **OEM-specific power-saving functionality**.

2.2.3 Activation code

QTI provides an activation code to enable the SkyLogger application in the test device.

To get the activation code, contact Qualcomm TPS support team at support.tps@qti.qualcomm.com

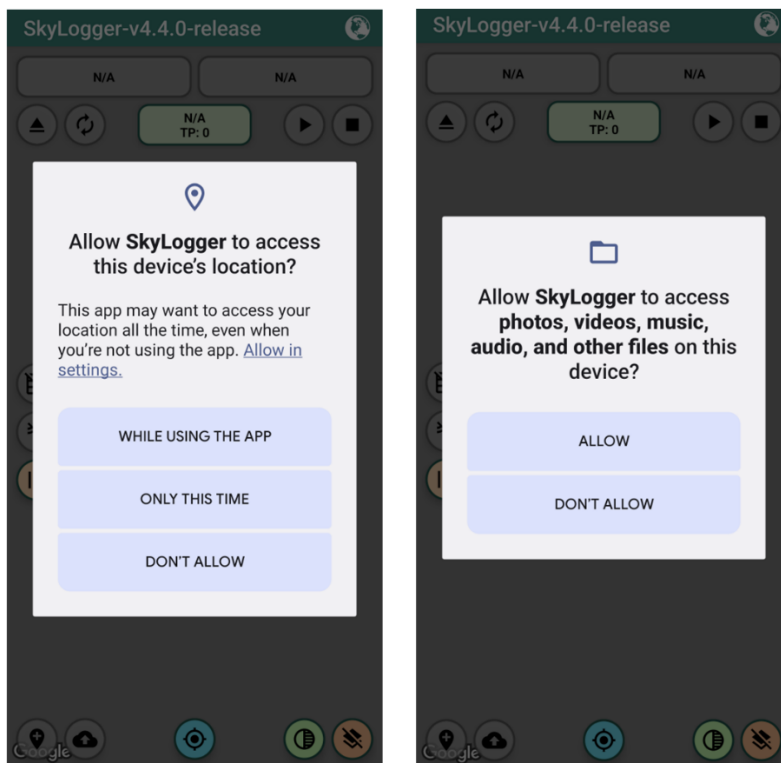
2.3 Install SkyLogger application

Prerequisites:

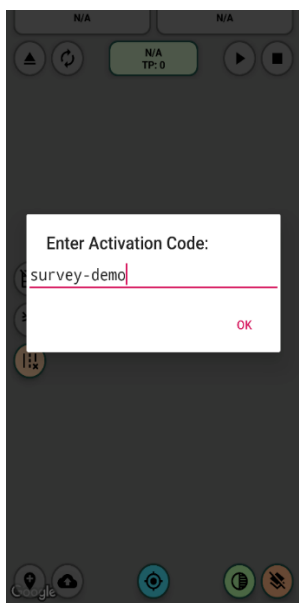
The device must be connected to the Internet to verify the activation code.

To install the SkyLogger application, do the following:

1. Install the SkyLogger application using the ADB command or the APK file.
2. Allow the following permissions on the device:
 - a. To access device location, tap **Location > Allow in settings > Allow all the time**.
 - b. To store and access device storage, tap **Photos, media, and files > Allow**.



3. Enter Activation code to verify the test device.



NOTE To get an activation code, share venue address and floor plan (if available) with QTI point of contact.

After successful verification of the activation code, the device is ready to perform the field tests.

3 SkyLogger application field test

The Qualcomm TPS SkyLogger application must have access to device location and storage permissions, .

Before performing the field test, configure the device and verify the activation code.

3.1 Best practices

Remember the following key points to have efficient and accurate test results while recording the sessions:

- Walk in straight-line segments at a slow and steady pace for walking surveys.
- The user must record the survey with the device in hand and line of sight (LoS) to the beacon.
- Do not survey with the device in backpack, pocket, and so on.
- If possible, survey each line segment from both directions.
- Survey the perimeter of all rooms and the middle of large open areas.
- If surveying an environment with many outside ambient beacon signals within the venue, it is recommended to use beacon whitelist/blacklist features.
- If whitelist/blacklist features are not used in the survey, a negative survey is valuable outside the perimeter of the venue.

3.2 Record a session

The SkyLogger application allows the user to map the location and record the logs.

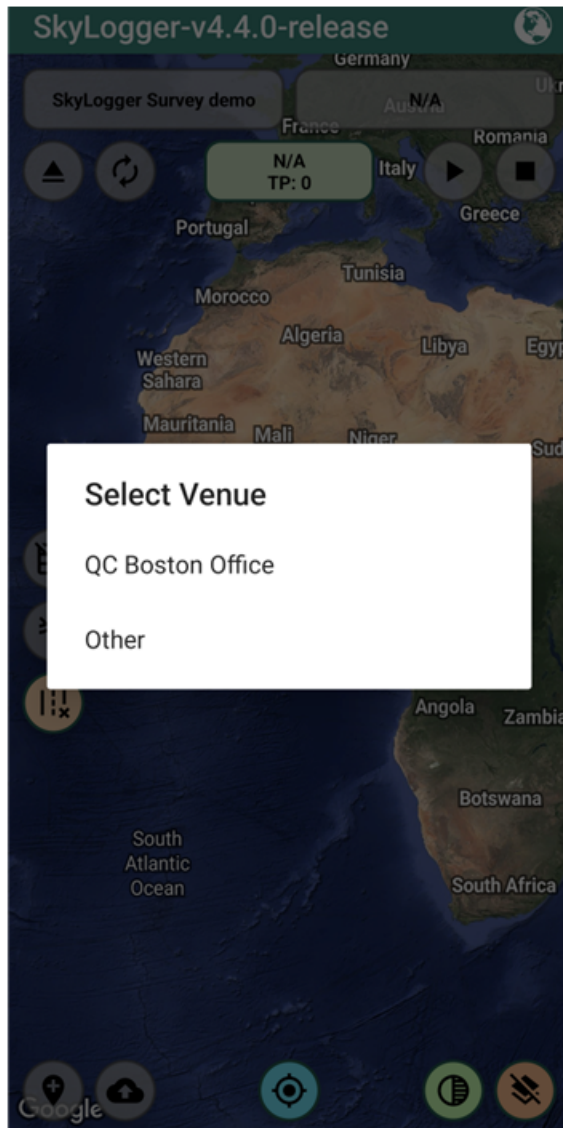
3.2.1 Configure the SkyLogger application

Prerequisites:

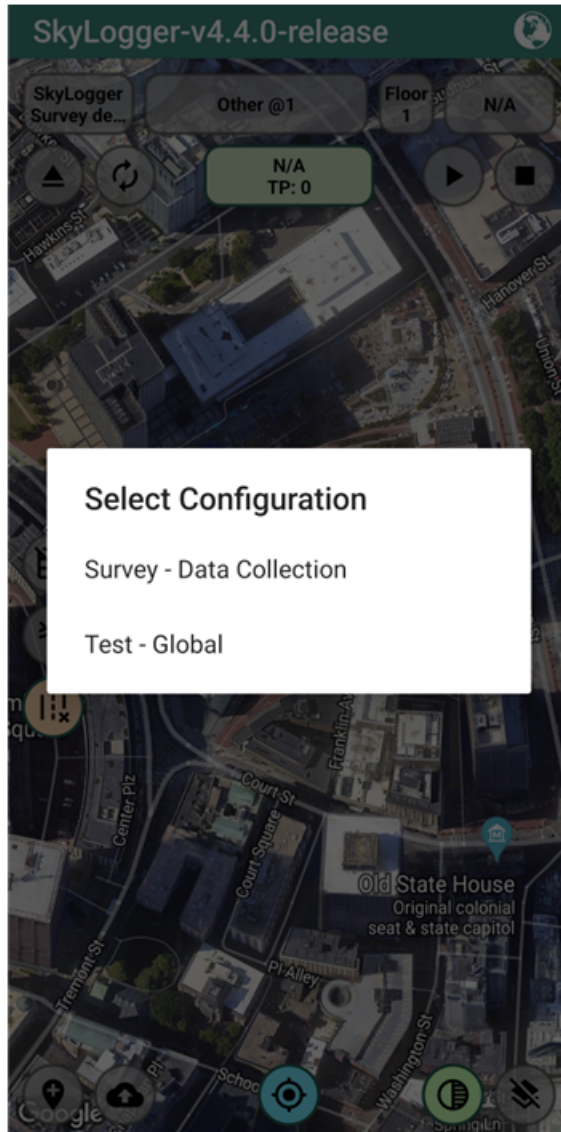
The test device must be successfully verified using the activation code.

To configure the Skylogger application to collect survey logs, do the following:

1. In the test device, open **SkyLogger** application.
2. In **Select Venue**, select the venue from the drop-down.



3. In **Select Configuration**, select **Survey – Data collection**.



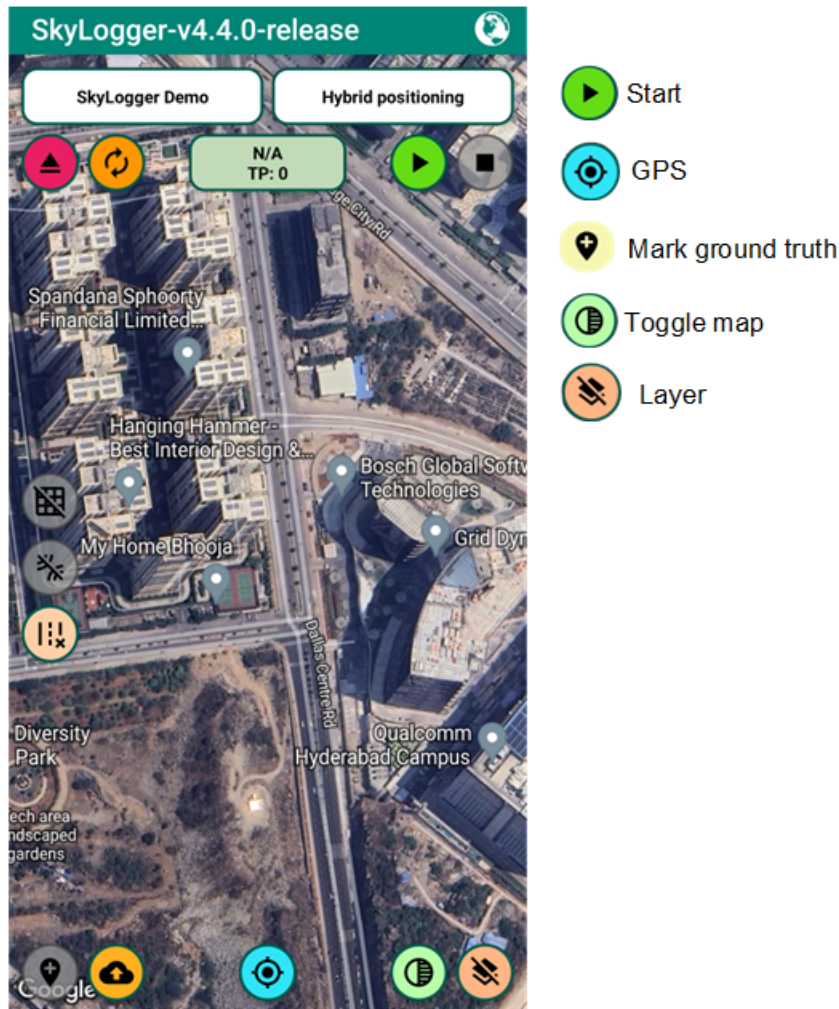
The device is now configured to perform the field tests.

3.3 Marking ground truth

Marking ground truth sets the current location to record the session.

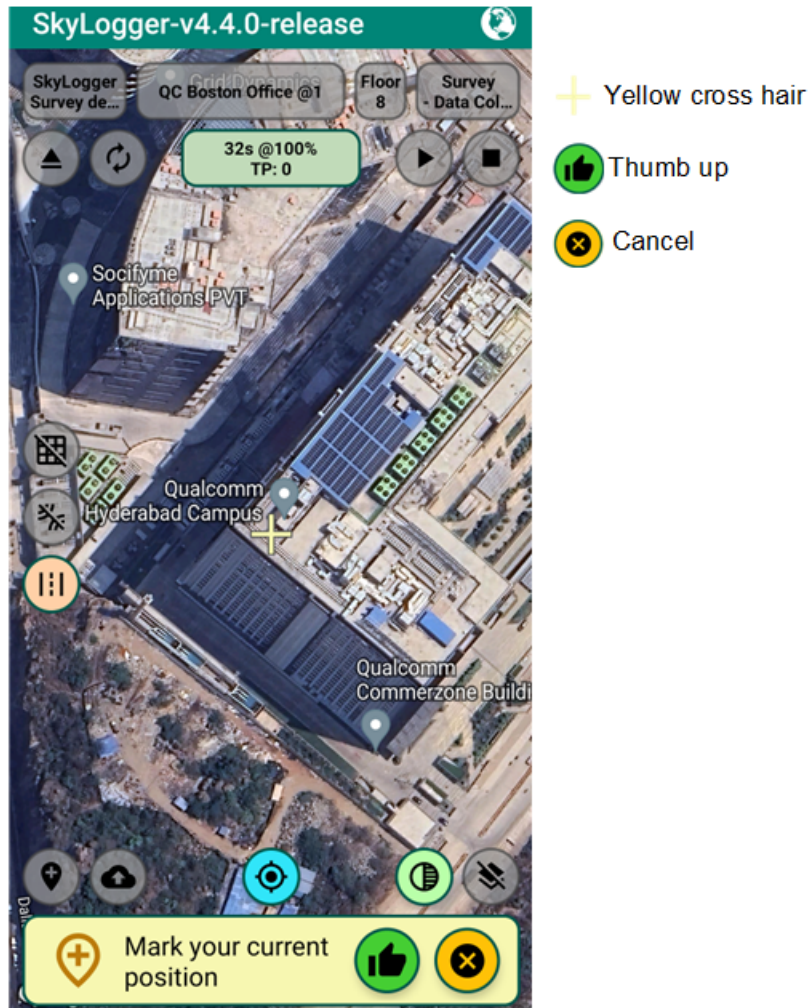
To mark the ground truth, do the following:

1. In the test device, open **SkyLogger** application.
2. At the top-left corner of the screen, tap **Start**.



3. At bottom of the screen, tap **GPS** to center the map to current location.
4. (Optional) Tap **Toggle map** to switch between roadmap view and satellite view.
5. (Optional) Tap **Layer** to toggle indoor map.
6. Tap **Mark ground truth** to set the location.
7. Adjust **Yellow cross hair** to mark ground truth for precise location.

8. Tap **Thumb up** to confirm the position.



After marking the ground truth to the intended location, `Ready to start record` message appears at the bottom of the application to record stationary survey or walking survey.

3.4 Perform stationary survey

A stationary survey collects the location details of a fixed indoor location.

Prerequisites:

Before starting a stationary survey, mark the ground truth and confirm the location.

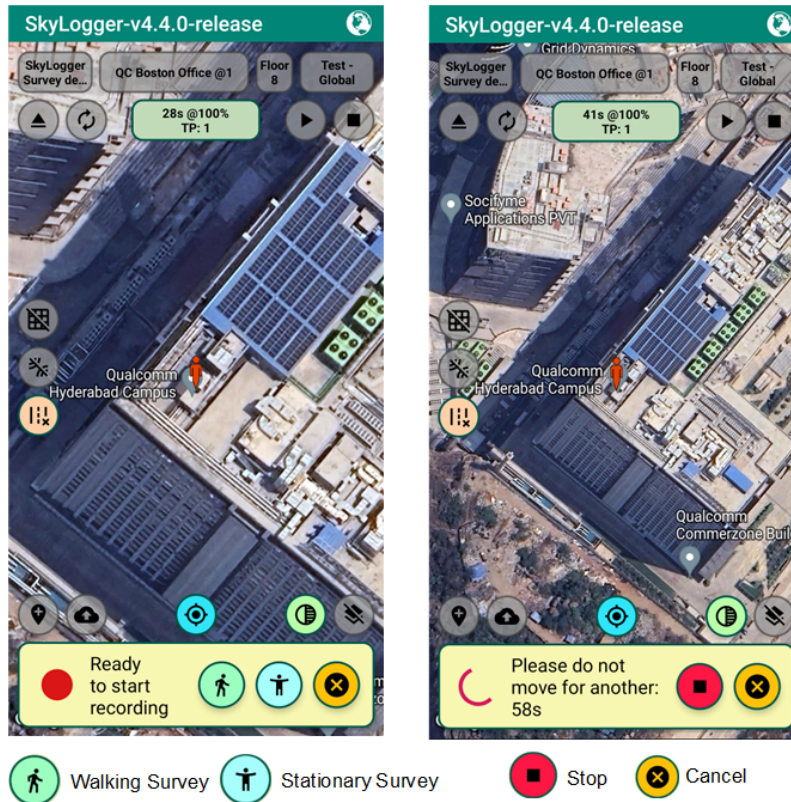
To start a stationary survey, do the following:

NOTE Do not move the device while performing the stationary survey.

1. At the bottom of the screen, tap **Stationary survey** to start recording the stationary test.
2. After 60 seconds, tap **Stop** at top-right corner of the screen to stop the session.
3. Move the device to the different location.

- Repeat the steps from [Marking ground truth](#) to record a session.

REMEMBER While performing the stationary survey test, do not move the device.



After recording the session, **Process results?** message appears at the bottom of the screen to upload, archive, or delete the recorded logs.

3.5 Perform walking survey

Walking survey collects the location details of the different locations while walking steadily in a straight path.

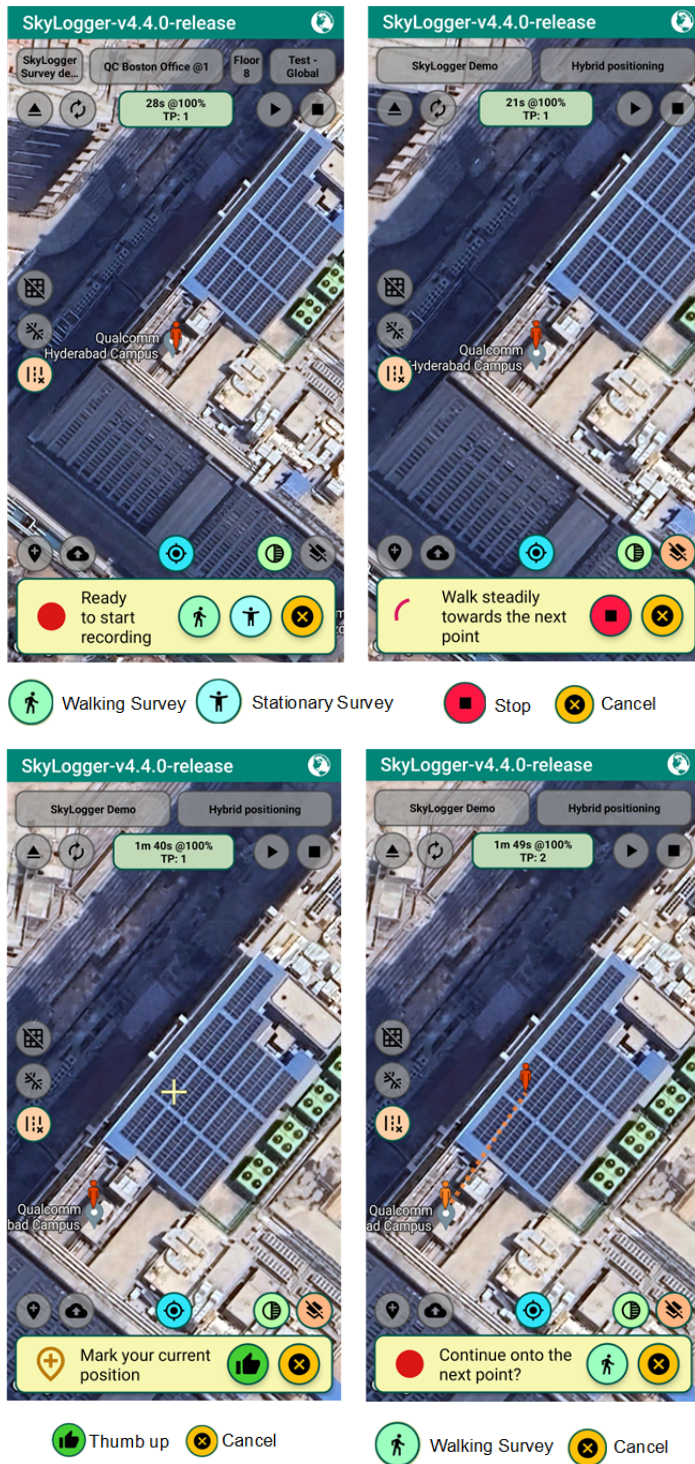
Prerequisites:

Mark the ground truth and confirm the location before starting a walking survey.

To start a walking survey, do the following:

- At the bottom of the screen, tap **Walking survey** to start recording the session.
- Walk steadily towards the next point in a straight path.
- Tap **Mark ground truth** to mark the point.
Continue onto the next point? message appears at the bottom of the application.
- Tap **Walking survey** to continue onto the next point.
Walk steadily towards the next point message appears at the bottom of the application.
- Repeat the steps from [Marking ground truth](#) to record session for different locations.

6. At the top-right corner of the screen, tap **Stop** to stop the recording the session.



After recording the session, **Process results?** message appears at the bottom of the screen to upload, archive, or delete the recorded logs.

3.6 Process results

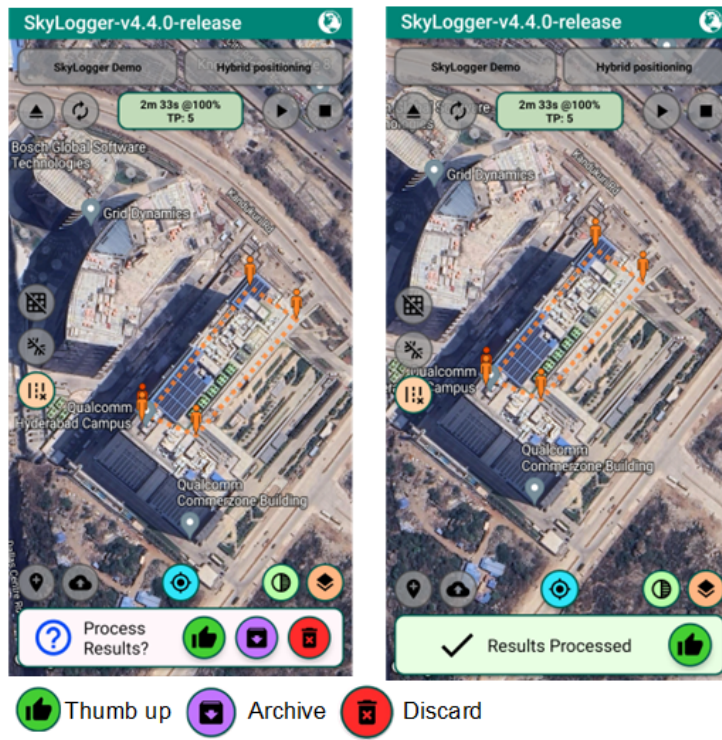
In the process results tab, session logs can be uploaded, archived, or deleted.

Prerequisites:

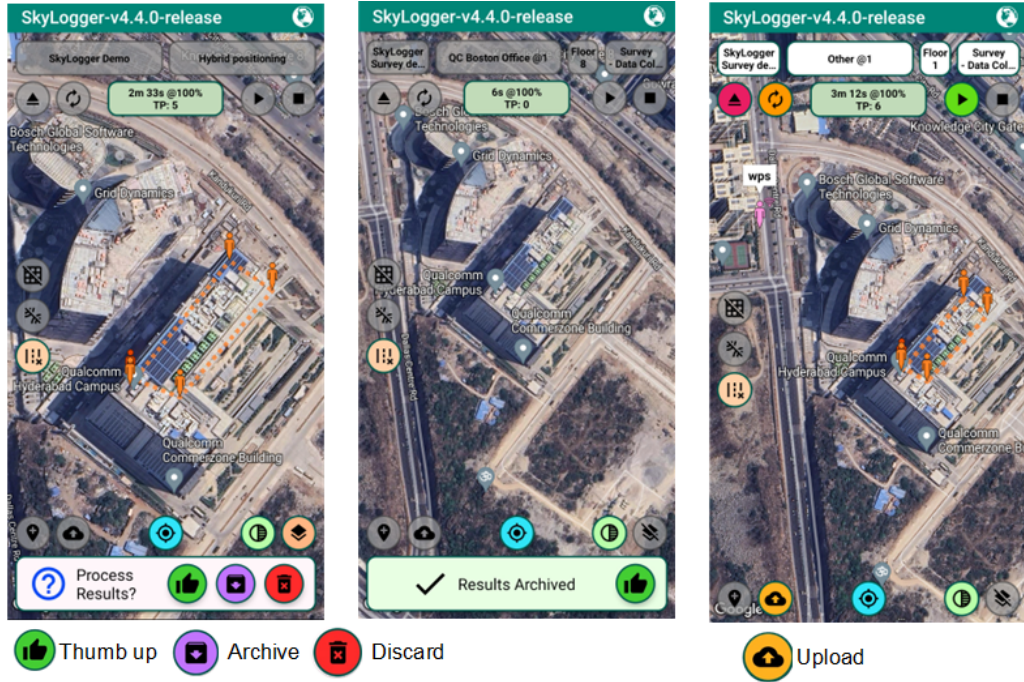
Record a session before processing results.

To process the results, do the following:

- To upload logs to the server, tap **Thumb up**.



- If the device is not connect to the Internet while processing the logs, archive the logs in the device:
 - a. Tap **Archive** to save the log file on the device.
 - b. Tap **Upload** to upload log file to the server when the device is connected to the Internet.



- Tap **Discard** to delete the session.

LEGAL INFORMATION

Your access to and use of this document, along with any specifications, reference board files, drawings, diagnostics and other information contained herein (collectively this “Documentation”), is subject to your (including the corporation or other legal entity you represent, collectively “You” or “Your”) acceptance of the terms and conditions (“Terms of Use”) set forth below. If You do not agree to these Terms of Use, you may not use this Documentation and shall immediately destroy any copy thereof.

1) Legal Notice.

This Documentation is being made available to You solely for Your internal use with those products and service offerings of Qualcomm Technologies, Inc. (“Qualcomm Technologies”) and its affiliates described in this Documentation, and shall not be used for any other purposes. This Documentation may not be altered, edited, or modified in any way without Qualcomm Technologies’ prior written approval. Unauthorized use or disclosure of this Documentation or the information contained herein is strictly prohibited, and You agree to indemnify Qualcomm Technologies, its affiliates and licensors for any damages or losses suffered by Qualcomm Technologies, its affiliates and licensors for any such unauthorized uses or disclosures of this Documentation, in whole or part.

Qualcomm Technologies, its affiliates and licensors retain all rights and ownership in and to this Documentation. No license to any trademark, patent, copyright, mask work protection right or any other intellectual property right is either granted or implied by this Documentation or any information disclosed herein, including, but not limited to, any license to make, use, import or sell any product, service or technology offering embodying any of the information in this Documentation.

THIS DOCUMENTATION IS BEING PROVIDED “AS IS” WITHOUT WARRANTY OF ANY KIND, WHETHER EXPRESSED, IMPLIED, STATUTORY OR OTHERWISE. TO THE MAXIMUM EXTENT PERMITTED BY LAW, QUALCOMM TECHNOLOGIES, ITS AFFILIATES AND LICENSORS SPECIFICALLY DISCLAIM ALL WARRANTIES OF TITLE, MERCHANTABILITY, NON-INFRINGEMENT, FITNESS FOR A PARTICULAR PURPOSE, SATISFACTORY QUALITY, COMPLETENESS OR ACCURACY, AND ALL WARRANTIES ARISING OUT OF TRADE USAGE OR OUT OF A COURSE OF DEALING OR COURSE OF PERFORMANCE. MOREOVER, NEITHER QUALCOMM TECHNOLOGIES, NOR ANY OF ITS AFFILIATES OR LICENSORS, SHALL BE LIABLE TO YOU OR ANY THIRD PARTY FOR ANY EXPENSES, LOSSES, USE, OR ACTIONS HOWSOEVER INCURRED OR UNDERTAKEN BY YOU IN RELIANCE ON THIS DOCUMENTATION.

Certain product kits, tools and materials referenced in this Documentation may require You to accept additional terms and conditions before accessing or using those items.

Technical data specified in this Documentation may be subject to U.S. and other applicable export control laws. Transmission contrary to U.S. and any other applicable law is strictly prohibited.

Nothing in this Documentation is an offer to sell any of the components or devices referenced herein.

This Documentation is subject to change without further notification.

In the event of a conflict between these Terms of Use and the *Website Terms of Use* on www.qualcomm.com or the *Qualcomm Privacy Policy* referenced on www.qualcomm.com, these Terms of Use will control. In the event of a conflict between these Terms of Use and any other agreement (written or click-through) executed by You and Qualcomm Technologies or a Qualcomm Technologies affiliate with respect to Your access to and use of this Documentation, the other agreement will control.

These Terms of Use shall be governed by and construed and enforced in accordance with the laws of the State of California, excluding the U.N. Convention on International Sale of Goods, without regard to conflict of laws principles. Any dispute, claim or controversy arising out of or relating to these Terms of Use, or the breach or validity hereof, shall be adjudicated only by a court of competent jurisdiction in the county of San Diego, State of California, and You hereby consent to the personal jurisdiction of such courts for that purpose.

2) Trademark and Product Attribution Statements.

Qualcomm is a trademark or registered trademark of Qualcomm Incorporated. Arm is a registered trademark of Arm Limited (or its subsidiaries) in the U.S. and/or elsewhere. The Bluetooth® word mark is a registered trademark owned by Bluetooth SIG, Inc. Other product and brand names referenced in this Documentation may be trademarks or registered trademarks of their respective owners.

Snapdragon and Qualcomm branded products referenced in this Documentation are products of Qualcomm Technologies, Inc. and/or its subsidiaries. Qualcomm patented technologies are licensed by Qualcomm Incorporated.