



Qualcomm Technologies, Inc.

QCC74x

Reference Schematic

80-WL740-41 Rev. AB

February 12, 2025

1 Reference schematic

1.1 Introduction

This document includes the parts list and schematic for QCC743 and QCC744.

1.2 Schematic

This schematic is subject to change without notice, and is not optimized for production products due to its conservative design approach and internal test requirements.

8

7

6

5



4

3

2

1

CONFIDENTIAL – QUALCOMM TECHNOLOGIES, INC. AND/OR ITS AFFILIATED COMPANIES – MAY CONTAIN TRADE SECRETS

COPYRIGHT QUALCOMM TECHNOLOGIES, INC. AND/OR ITS SUBSIDIARIES. ALL RIGHTS RESERVED.

NO PUBLIC DISCLOSURE PERMITTED: PLEASE REPORT POSTINGS OF THIS DOCUMENT ON PUBLIC SERVERS OR WEBSITES TO: DOCCTRLAGENT@QUALCOMM.COM.

MAY CONTAIN U.S. AND INTERNATIONAL EXPORT CONTROLLED INFORMATION

YOUR ACCESS TO AND USE OF THIS MATERIAL, ALONG WITH ANY DOCUMENTS, SOFTWARE, SPECIFICATIONS, REFERENCE BOARD FILES, DRAWINGS, DIAGNOSTICS AND OTHER INFORMATION CONTAINED HEREIN (COLLECTIVELY THIS "MATERIAL"), IS SUBJECT TO YOUR (INCLUDING THE CORPORATION OR OTHER LEGAL ENTITY YOU REPRESENT, COLLECTIVELY "YOU" OR "YOUR") ACCEPTANCE OF THE TERMS AND CONDITIONS ("TERMS OF USE") SET FORTH AT [HTTPS://WWW.QUALCOMM.COM/LEGAL-INFORMATION](https://www.qualcomm.com/legal-information). IF YOU DO NOT AGREE TO THESE TERMS OF USE, YOU MAY NOT USE THIS MATERIAL AND SHALL IMMEDIATELY DESTROY ANY COPY THEREOF.

REVISIONS

REV	DESCRIPTION	DATE	APPROVED
AB	----	----	----

QCC74x Reference Schematic

CONTRACT NO.		QUALCOMM TECHNOLOGIES, INC. 5775 MOREHOUSE DRIVE SAN DIEGO, CA 92121 U.S.A		
DRAWN BY	DATE	TITLE QCC74x Reference Schematic		
ENGINEER				
PROJECT ENGINEER		DRAWING NO 80-WL740-41		
QUALITY ASSURANCE				
CONFIGURATION		SIZE D	REV AB	
DESIGN ACTIVITY APPROVAL		RELEASE DATE		SHEET
DESIGN APPROVAL		SCALE		

8

7

6

5

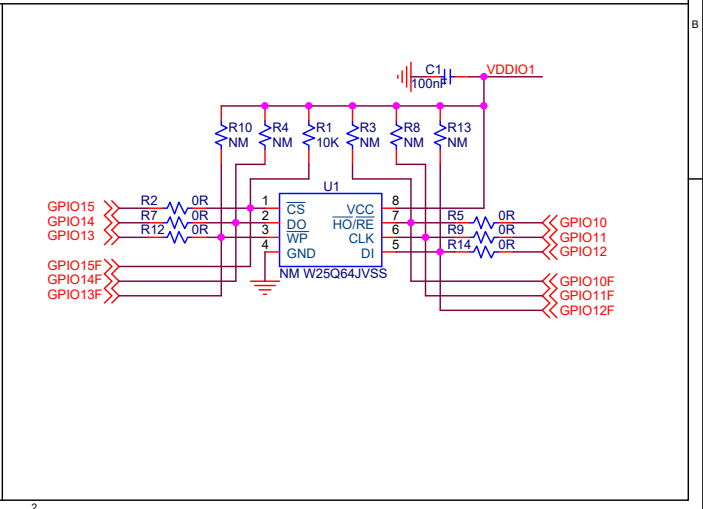
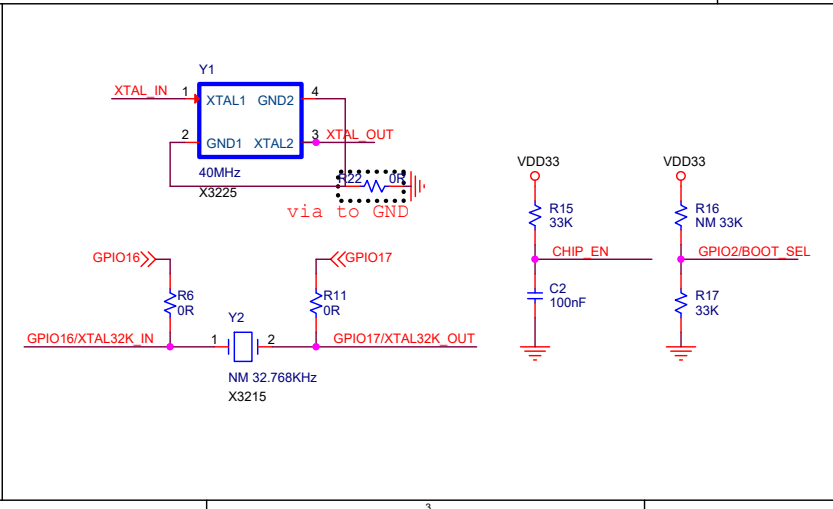
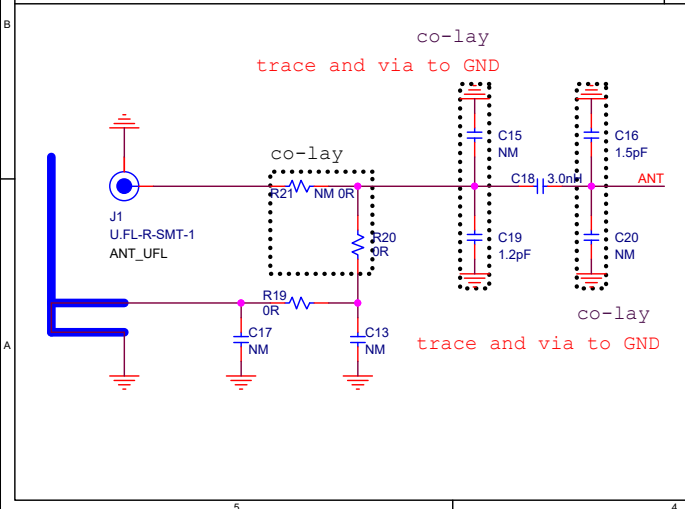
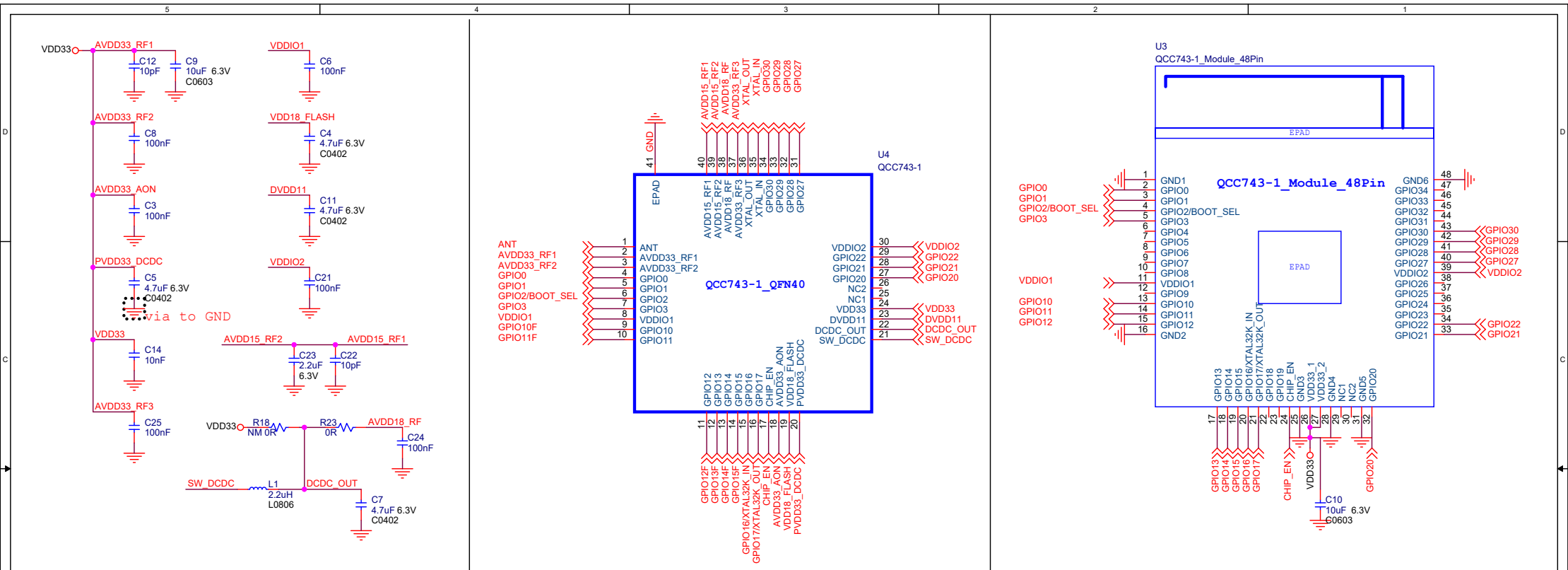


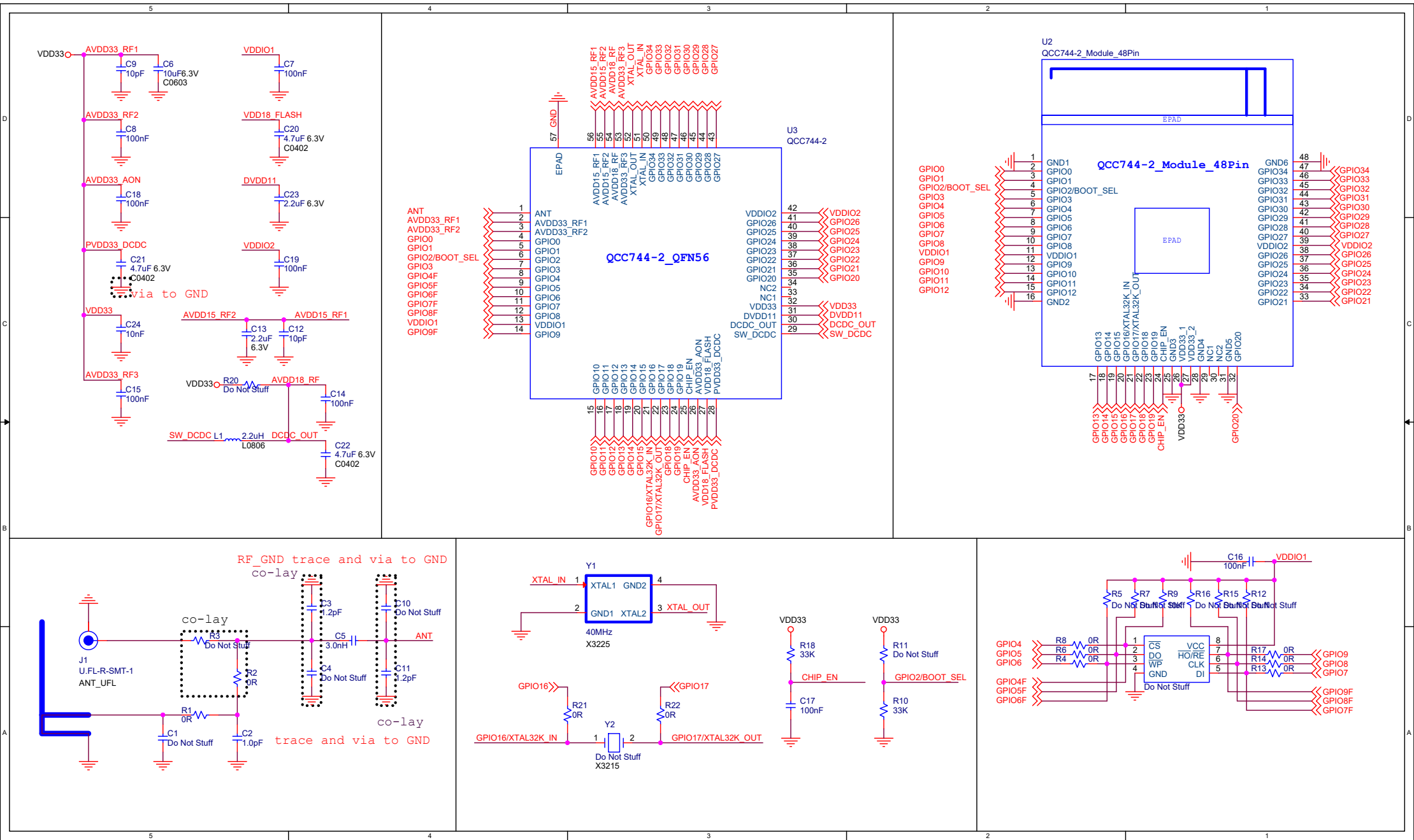
4

3

2

1





2 Parts list

Table 2-1 Parts list

Part Reference	MPN	Manufacturer	Description	Quantity	Value	Voltage	Tolerance	PCB Footprint
QCC743								
C1 C2 C3 C6 C8 C21 C24 C25	GRM155R71H104KE14D	Murata	100nF 0402 50V ±10% X7R	8	100nF	50V	±10%	C0402
C4 C5 C7 C11	GRM155R60J475ME87D	Murata	4.7uF 0402 6.3V ±20% X5R	4	4.7uF	6.3V	±20%	C0402
C9 C10	GRM188R60J106ME47D	Murata	10uF 0603 6.3V ±20% X5R	2	10uF	6.3V	±20%	C0603
C12 C22	GRM1555C1H100JA01D	Murata	10pF 0402 50V ±5% COG	2	10pF	50V	±5%	C0402
C14	GRM155R71C103JA01D	Murata	10nF 0402 16V ±5% X7R	1	10nF	16V	±5%	C0402
C16	GRM1555C1H1R5BA01D	Murata	1.5pF 0402 50V ±0.1pF COG	1	1.5pF	50V	±0.1pF	C0402
C18	LQP15MN3N0B02D	Murata	3.0nH 0402 190mA ±0.1nH	1	3.0nH		±0.1nH	C0402
C19	GRM1555C1H1R2BA01D	Murata	1.2pF 0402 50V ±0.1pF COG	1	1.2pF	50V	±0.1pF	C0402
C23	GRM155R60J225ME15D	Murata	2.2uF 0402 6.3V ±20% X5R	1	2.2uF	6.3V	±20%	C0402
J1	U.FL-R-SMT-1(80)	HRS	U.FL-R-SMT-1(80)	1	U.FL-R-SMT-1			ANT_UFL
L1	DFE201612E-2R2M=P2	muRata	2.2uH 0806 1.8A ±20%	1	2.2uH		±20%	L0806
R1	RC0402FR-0710KL	Yageo	10K 0402 ±1%	1	10K	50V	±1%	R0402
R2 R5 R6 R7 R9 R11 R12 R14 R19 R20 R22 R23	RC0402FR-070RL	Yageo	0R 0402 ±1%	12	0R	50V	±1%	R0402
R15 R17	RC0402FR-0733KL	Yageo	33K 0402 ±1%	2	33K	50V	±1%	R0402
U4	QCC743	Qualcomm	QCC743	1	QCC743			QFN40_5X5MM
Y1	E3SB40E00001NE	HOSONIC	40MHz ±10ppm 3225 12pF	1	40MHz			X3225
			Shield cover	1	Shield cover			
QCC744								
C2	GRM1555C1H1R0BA01D	Murata	1.0pF 0402 50V ±0.1pF COG	1	1.0pF	50V	±0.1pF	C0402
C3 C11	GRM1555C1H1R2BA01D	Murata	1.2pF 0402 50V ±0.1pF COG	2	1.2pF	50V	±0.1pF	C0402
C5	LQP15MN3N0B02D	Murata	3.0nH 0402 190mA ±0.1nH	1	3.0nH		±0.1nH	C0402
C6	GRM188R60J106ME47D	Murata	10uF 0603 6.3V ±20% X5R	1	10uF	6.3V	±20%	C0603
C7 C8 C14 C15 C16 C17 C18 C19	GRM155R71H104KE14D	Murata	100nF 0402 50V ±10% X7R	8	100nF	50V	±10%	C0402
C9 C12	GRM1555C1H100JA01D	Murata	10pF 0402 50V ±5% COG	2	10pF	50V	±5%	C0402
C13 C23	GRM155R60J225ME15D	Murata	2.2uF 0402 6.3V ±20% X5R	2	2.2uF	6.3V	±20%	C0402
C20 C21 C22	GRM155R60J475ME87D	Murata	4.7uF 0402 6.3V ±20% X5R	3	4.7uF	6.3V	±20%	C0402
C24	GRM155R71C103JA01D	Murata	10nF 0402 16V ±5% X7R	1	10nF	16V	±5%	C0402
J1	U.FL-R-SMT-1(80)	HRS	U.FL-R-SMT-1(80)	1	U.FL-R-SMT-1			ANT_UFL
L1	DFE201612E-2R2M=P2	muRata	2.2uH 0806 1.8A ±20%	1	2.2uH		±20%	L0806
R1 R2 R4 R6 R8 R13 R14 R17 R21 R22	RC0402FR-070RL	Yageo	0R 0402 ±1%	10	0R	50V	±1%	R0402
R9	RC0402FR-0710KL	Yageo	10K 0402 ±1%	1	10K	50V	±1%	R0402
R10 R18	RC0402FR-0733KL	Yageo	33K 0402 ±1%	2	33K	50V	±1%	R0402
U3	QCC744	Qualcomm	QCC744	1	QCC744			QFN56_7X7MM
Y1	E3SB40E00001NE	HOSONIC	40MHz ±10ppm 3225 12pF	1	40MHz			X3225
			Shield cover	1	Shield cover			

LEGAL INFORMATION

Your access to and use of this material, along with any documents, software, specifications, reference board files, drawings, diagnostics and other information contained herein (collectively this "Material"), is subject to your (including the corporation or other legal entity you represent, collectively "You" or "Your") acceptance of the terms and conditions ("Terms of Use") set forth below. If You do not agree to these Terms of Use, you may not use this Material and shall immediately destroy any copy thereof.

1) Legal Notice.

This Material is being made available to You solely for Your internal use with those products and service offerings of Qualcomm Technologies, Inc. ("Qualcomm Technologies"), its affiliates and/or licensors described in this Material, and shall not be used for any other purposes. If this Material is marked as "Qualcomm Internal Use Only", no license is granted to You herein, and You must immediately (a) destroy or return this Material to Qualcomm Technologies, and (b) report Your receipt of this Material to qualcomm.support@qti.qualcomm.com. This Material may not be altered, edited, or modified in any way without Qualcomm Technologies' prior written approval, nor may it be used for any machine learning or artificial intelligence development purpose which results, whether directly or indirectly, in the creation or development of an automated device, program, tool, algorithm, process, methodology, product and/or other output. Unauthorized use or disclosure of this Material or the information contained herein is strictly prohibited, and You agree to indemnify Qualcomm Technologies, its affiliates and licensors for any damages or losses suffered by Qualcomm Technologies, its affiliates and/or licensors for any such unauthorized uses or disclosures of this Material, in whole or part.

Qualcomm Technologies, its affiliates and/or licensors retain all rights and ownership in and to this Material. No license to any trademark, patent, copyright, mask work protection right or any other intellectual property right is either granted or implied by this Material or any information disclosed herein, including, but not limited to, any license to make, use, import or sell any product, service or technology offering embodying any of the information in this Material.

THIS MATERIAL IS BEING PROVIDED "AS IS" WITHOUT WARRANTY OF ANY KIND, WHETHER EXPRESSED, IMPLIED, STATUTORY OR OTHERWISE. TO THE MAXIMUM EXTENT PERMITTED BY LAW, QUALCOMM TECHNOLOGIES, ITS AFFILIATES AND/OR LICENSORS SPECIFICALLY DISCLAIM ALL WARRANTIES OF TITLE, MERCHANTABILITY, NON-INFRINGEMENT, FITNESS FOR A PARTICULAR PURPOSE, SATISFACTORY QUALITY, COMPLETENESS OR ACCURACY, AND ALL WARRANTIES ARISING OUT OF TRADE USAGE OR OUT OF A COURSE OF DEALING OR COURSE OF PERFORMANCE. MOREOVER, NEITHER QUALCOMM TECHNOLOGIES, NOR ANY OF ITS AFFILIATES AND/OR LICENSORS, SHALL BE LIABLE TO YOU OR ANY THIRD PARTY FOR ANY EXPENSES, LOSSES, USE, OR ACTIONS HOWSOEVER INCURRED OR UNDERTAKEN BY YOU IN RELIANCE ON THIS MATERIAL.

Certain product kits, tools and other items referenced in this Material may require You to accept additional terms and conditions before accessing or using those items.

Technical data specified in this Material may be subject to U.S. and other applicable export control laws. Transmission contrary to U.S. and any other applicable law is strictly prohibited.

Nothing in this Material is an offer to sell any of the components or devices referenced herein.

This Material is subject to change without further notification.

In the event of a conflict between these Terms of Use and the Website Terms of Use on www.qualcomm.com, the *Qualcomm Privacy Policy* referenced on www.qualcomm.com, or other legal statements or notices found on prior pages of the Material, these Terms of Use will control. In the event of a conflict between these Terms of Use and any other agreement (written or click-through, including, without limitation any non-disclosure agreement) executed by You and Qualcomm Technologies or a Qualcomm Technologies affiliate and/or licensor with respect to Your access to and use of this Material, the other agreement will control.

These Terms of Use shall be governed by and construed and enforced in accordance with the laws of the State of California, excluding the U.N. Convention on International Sale of Goods, without regard to conflict of laws principles. Any dispute, claim or controversy arising out of or relating to these Terms of Use, or the breach or validity hereof, shall be adjudicated only by a court of competent jurisdiction in the county of San Diego, State of California, and You hereby consent to the personal jurisdiction of such courts for that purpose.

2) Trademark and Product Attribution Statements.

Qualcomm is a trademark or registered trademark of Qualcomm Incorporated. Arm is a registered trademark of Arm Limited (or its subsidiaries) in the U.S. and/or elsewhere. The Bluetooth® word mark is a registered trademark owned by Bluetooth SIG, Inc. Other product and brand names referenced in this Material may be trademarks or registered trademarks of their respective owners.

Snapdragon and Qualcomm branded products referenced in this Material are products of Qualcomm Technologies, Inc. and/or its subsidiaries. Qualcomm patented technologies are licensed by Qualcomm Incorporated.